

XLIV ANNUAL
DON Q. RUM KEG SNIPE REGATTA
MARCH 19-21, 2010



COCONUT GROVE SAILING CLUB, AND SNIPE FLEET 7
SPONSORED BY DESTILERIA SERRALLES
SAILING INSTRUCTIONS

1. **RULES:**

- 1.1. The regatta will be governed by the rules as defined in The Racing Rules of Sailing (RRS).
- 1.2. The Snipe Class International Racing Association (SCIRA) Rules of Conduct to be used will be the SCIRA Rules of Conduct For Conducting National and Local Regattas (ROC).

2. **NOTICE TO COMPETITORS:**

- 2.1. Notices to competitors will be posted on the official regatta notice board located adjacent to the Coconut Grove Sailing Club (CGSC) Dockmaster's office.

3. **CHANGES TO SAILING INSTRUCTIONS:**

- 3.1. Any change or amendment to the Sailing Instructions will be posted before 0800 on the day it will take effect, except that any change in the schedule of races will be posted by 1900 hours on the day before it will take effect.
- 3.2. Any change or amendment to the Sailing Instructions will have the prior approval of the Regatta Chairman, the PRO or the SCIRA Representative

4. **SIGNALS MADE ASHORE:**

- 4.1. Signals made ashore will be displayed at the CGSC flag hoist.
- 4.2. Flag AP is displayed ashore, "1 minute" is replaced with "not less than ninety (90) minutes" in the race signal AP.

5. **SCHEDULE OF RACES:**

- 5.1. Five races are scheduled with the warning signal for the first race scheduled each day as follows:
 - a) Friday, March 19 2010 Warning Signal for the first race of the day at 1200.
 - b) Saturday March 20, 2010 Warning Signal for the first race of the day at 1200.
 - c) Sunday, March 21, 2010 Warning Signal for the first race of the day at 1100
- 5.2. No warning signal will be made after 1400 hours on Sunday.

6. **CLASS FLAG:**

- 6.1. The Class Flag will be a white flag with the Snipe insignia/emblem.

7. **RACING AREA:**

- 7.1. The Racing Area location is in Biscayne Bay in the vicinity of the entrance to Brennan's Channel.
- 7.2. The distance and direction from the harbor to the racing area is approximately 2 nautical miles in an easterly to south easterly direction.

8. **COURSES:**

- 8.1. The diagram in Attachment "A" shows the courses, including the approximate angles between legs, the order in which the marks are to be passed, and the side on which each mark is to be left. The course length will be based on sailing conditions.
- 8.2. No later than one minute before the warning signal, the Race Committee signal boat will display the course to be sailed using code flag "O" for the Olympic course, code flag "T" for the Triangle course, and course flag "W" for the Windward Leeward course with all courses finishing to windward. Courses to be sailed finishing downwind use code flags "OD" for the Gold Cup course, code flags "TD" for the Triangle course, and course flags "WD" for the Windward Leeward course. This changes RRS 27.1.
- 8.3. The course signal flag will be accompanied by one horn signal when raised and will remain displayed for ten minutes after the start. This changes RRS 27.1.
- 8.4. The approximate compass bearing to Mark 1 shall be displayed by a numerical posting on a board on the Race Committee signal boat before the Preparatory signal.

- 8.5. All marks shall be left to port unless it is a gate or the “start/finish mark” when finishing.
9. **MARKS:**
- 9.1. Marks 1, 2 and 3 shall be orange tetrahedrons.
 - 9.2. Start/finish mark (Mark S) shall be a yellow tetrahedron.
 - 9.3. New marks as provided in RRS 33 shall be yellow tetrahedrons.
 - 9.4. For the Windward/Leeward course(s) (course “W” or “WD”), an orange ball will be set as an offset mark approximately four (4) boat lengths adjacent and to port of Mark 1 and a leeward gate will replace Mark 3 (leeward). The two marks forming the gate will be located approximately seven boat lengths apart.
 - 9.5. Mark 3 is not a mark of the course when completing the second lap of courses “WD”, “TD”, or “OD”.
 - 9.6. The Race Committee Signal Boat may set an inflatable buoy attached to its stern. The inflatable buoy and its attachment line are a limit mark and must be left to starboard when starting and when finishing downwind must be left to port.
10. **THE START:**
- 10.1. The starting line will be between a staff displaying an orange flag or shape on the Race Committee boat at the starboard end and the port-end start/finish mark.
 - 10.2. Boats starting later than ten (10) minutes after their starting signal will be scored Did Not Start (DNS) without a hearing. This changes ROC 8.1.
 - 10.3. The starting line shall be set approximately 30 meters or 33 yards downwind of Mark 3 (leeward). Mark 3 is not a mark of the course for the first leg of the race.
11. **CHANGE OF THE NEXT LEG OF THE COURSE:**
- 11.1. If a change of the next leg of the course has taken place and there is a need for a subsequent change of course a new mark is replaced with a primary type of mark.
 - 11.2. Shortening or lengthening the next leg of the course shall not be by more than 30% of the original leg length. This changes RRS 33.
12. **THE FINISH:**
- 12.1. For courses “W”, “T”, and “O”, the finish line shall be between a staff displaying an orange flag on a race committee boat at the starboard end and Mark “1” at the port-end.
 - 12.2. For courses “WD”, “TD”, and “OD”, the finish line shall be between a staff displaying an orange flag or shape on the Race Committee boat at the port end and the start/finish mark at the starboard end.
 - 12.3. If the Race Committee intends to start another race on the same day, it will display Flag “R” (with no sound). Flag “R” will be lowered with one sound signal one minute before the Warning Signal for the next race.
13. **PENALTIES:**
- 13.1. Any competitor taking a penalty in accordance with RRS 44.1 or 44.2 will notify the Race Committee promptly upon finishing that race and will also inform the Race Committee of the identity of the other boat involved. This changes RRS 61.
 - 13.2. Bow numbers will be assigned at registration and it will be each competitor’s sole responsibility to properly affix them in conformance with the instructions in the registration packet and to properly maintain them. Any boat that is determined by the Race Committee to have violated this rule shall be assessed the same penalty as a Check In Failure (CNF) for the first race competed in by the infringing boat on the day of the infraction.
 - 13.3. Any boat failing to check-in, in accordance with 17.1 and 17.2, shall receive a scoring penalty in conformance with the SCIRA Scoring System - Penalties, and shall be ranked as a starter for scoring purposes only.
14. **TIME LIMIT:**
- 14.1. In addition to ROC 12 and 12.1, should the first boat fail to complete the first lap within 1.25 hours, the Race Committee shall abandon the race. For the purpose of this Rule a lap shall mean the rounding of mark 3 for the first time.
 - 14.2. Boats failing to finish within thirty (30) minutes after the first boat sails the course and finishes will be scored a Did Not Finish (DNF) without a hearing. This changes RRS 35, A4, and A5.
15. **PROTEST:**
- 15.1. A competitor’s intent to protest shall be reported to the Race Committee promptly upon finishing the race in which the incident occurred. This changes RRS 61.1(a).
 - 15.2. Protest Filing Time shall be within one hour after the Race committee Finish Boat Docking Time which shall be posted on the official notice board.

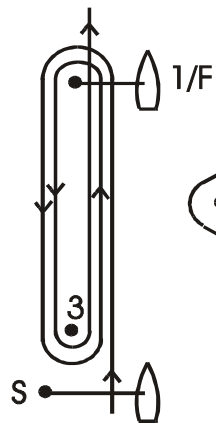
- 15.3. Protests shall be made in writing on forms available at the official notice board and filed with the Principal Race Officer (PRO) prior to the expiration of the Protest Filing Time.
- 15.4. Protest notices and hearing schedules specifying the protester and protestee shall be posted no later than one-half hour after the expiration of the protest filing time limit.
- 15.5. A boat may not protest another boat for a breach of RRS 75.2 with respect to ISAF Regulation 19. This changes RRS 60.1(a).
- 15.6. On the last scheduled day of racing a request for reopening a hearing shall be delivered:
- within the protest time limit if the requesting party was informed of the decision on the previous day.
 - no later than 30 minutes after the requesting party was informed of the decision on that day.
16. **SCORING:**
- 16.1. One race is required to be completed to constitute a series.
- 16.2. A boats series score will be the total of her race scores.
- 16.3. A boat that checks in for a race will be ranked as a starter for that race.
- 16.4. A boat that did not finish shall be scored DNF by the Race Committee without a hearing and shall be scored points equal to one more than the number of finishers. This changes RRS A4.2 and the SCIRA Scoring System – Penalties.
17. **SAFETY REGULATIONS:**
- 17.1. Before starting EACH RACE, but not before code flag “L” is displayed by the Race Committee Signal Boat, each boat is required to sail on starboard tack past the stern of the Main Race Committee boat and verbally check in.
- 17.2. When the Race Committee verbally acknowledges a boat’s bow number, the check-in has been officially noted.
- 17.3. A boat that retires from a race shall notify the Race Committee as soon as possible.
18. **REPLACEMENT OF CREW:**
- 18.1. The same crew shall race in all races, except for reasons satisfactory to the Race Committee.
- 18.2. Requests for the replacement of any member of the crew shall be submitted in writing to the PRO prior to 0900 on the day the change will take effect.
- 18.3. The request for replacement of any member of the crew requires the approval of the PRO or the Race Committee Chair.
- 18.4. Once a skipper and/or crew have been excused, they may not return for the balance of the series.
- 18.5. Co-skippers shall be allowed subject to the restrictions of 18.1 and 18.2.
19. **EQUIPMENT AND MEASUREMENT CHECKS:**
- 19.1. The Race Committee may inspect competitors or boats not racing at that time. Equipment inspections may be initiated at the finish of any race.
20. **SUPPORT BOATS:**
- 20.1. No coach, other support or spectator vessels shall be within 100 yards of the racing course except to render assistance. Any competitor associated with personnel determined to have violated this rule shall be subject to protest and assessed a 20% penalty for the race in which the violation occurred.
21. **DISPOSAL OF REFUSE:**
- 21.1. The discharge of refuse into the water is prohibited during the entirety of this event. Any boat observed to be in violation is subject to protest and shall be assessed a 20% percentage penalty for the first race competed in by the infringing boat on the day of the infraction.
22. **PRIZES:**
- 22.1. Prizes shall be awarded to the skipper and crew for the top ten places.
23. **DISCLAIMER OF LIABILITY:**
- 23.1. Competitors participate in the regatta entirely at their own risk. See rule 4, Decision to Race. The Organizing Authority will not accept any liability for material damage or personal injury or death sustained in conjunction with or prior to, during or after the regatta

Jaime A. Ramon
Principal Race Officer

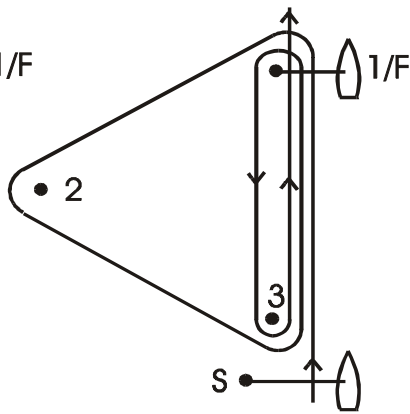
Brainard Cooper
Class Representative

Rev. 4/3/10

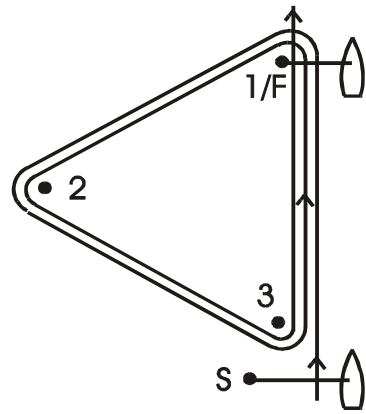
ATTACHEMENT "A"



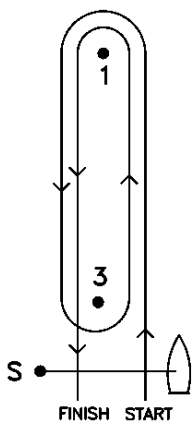
"W"



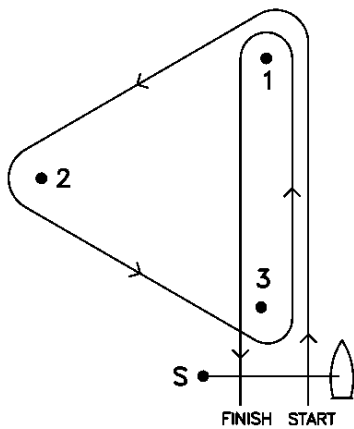
"O"



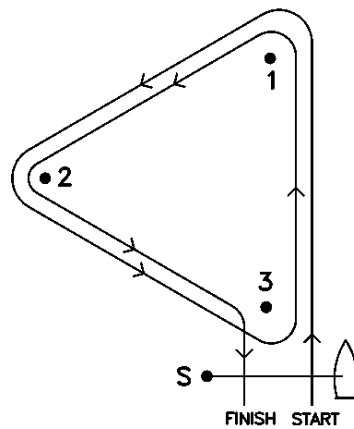
"T"



"WD"



"OD"



"TD"

